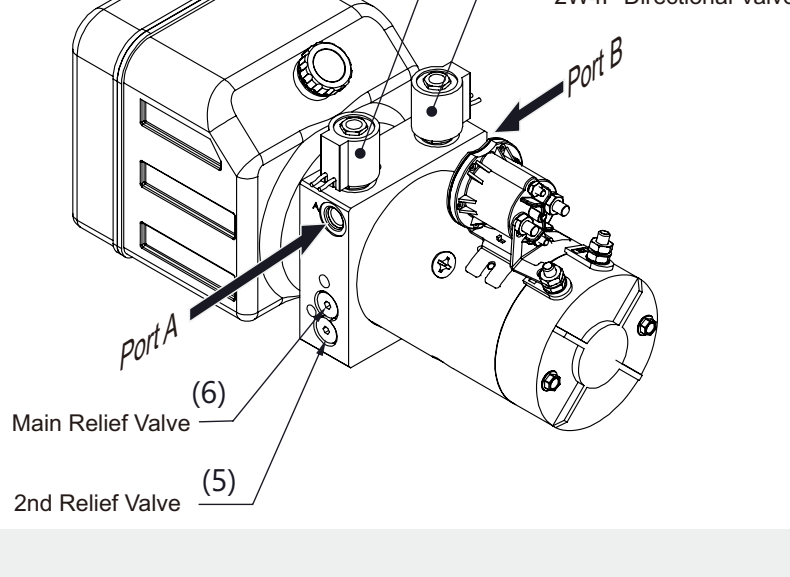
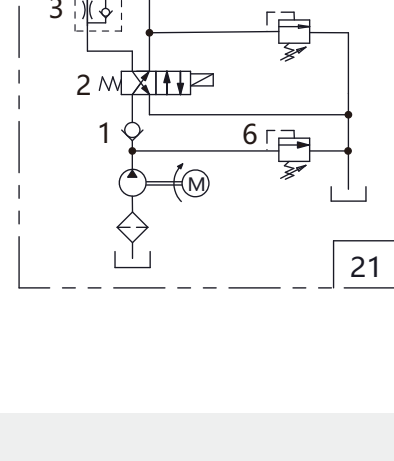


DP13M21-4*-RP*

- Drive double acting cylinder extending and retracting.
- Variety motor power generate different pressure and flow.
- Optional Flow Control Valve (3).
Return flow at cylinder retracting can be restricted by an optional flow control valve (3) with reverse flow check. The orifice in this valve could be specified according to customer's specification.
- 2-way Solenoid Valve (4).
You have two option on this 2-way solenoid valve:
1. No Manual Override (Default)
2. With Manual Override
- Port Size: O-ring Boss SAE #6# (9/16-18UNF), on port A and B Other port size upon customer's requirement.
- Standard Duty Cycle is S1=2 minute, S2 15%. Please consult us for Longer duty cycle.
- Optional Tanks: Series RP, LS, LT, MS, MT,.
- Controller Options:
1) KCB22, the basic remote control handset.
2) WRB22, economy wireless remote.
- Popular Applications: Dump Truck, Dump Trailer, Mobile Home (RV), etc..



DP13M21-416A-RP* - Rated Power 1.6W (12V only)

Pump Displacement	1.1cc	1.3cc	1.6cc	2.1cc
Rated Pressure	22MPa(3200PSI)	20MPa(2900PSI)	16MPa (2300PSI)	13MPa(1900PSI)
Flow Rate @ Rated Pressure	1.4LPM(0.37GPM)	1.7LPM(0.45GPM)	3.7LPM(1GPM)	4.8LPM(1.28GPM)
Max Pressure	27MPa(3900PSI)	27MPa(3900PSI)	23MPa(3300PSI)	21MPa(3000PSI)
Flow Rate @ Max. Pressure	1.1LPM(0.28GPM)	1.2LPM(0.32GPM)	2LPM(0.5GPM)	2.4LPM(0.6GPM)

DP13M21-422B-RP* - Rated Power 2.2kW (24V only)

Pump Displacement	1.3cc	1.6cc	2.1cc	2.7cc
Rated Pressure	25MPa(3600PSI)	22MPa (3200PSI)	18MPa(2600PSI)	13MPa(1880PSI)
Flow Rate @ Rated Pressure	1.7LPM(0.45GPM)	2.2LPM(0.58GPM)	4.8LPM(1.2GPM)	6.2LPM(1.6GPM)
Max Pressure	27MPa(3900PSI)	25MPa(3600PSI)	23MPa(3300PSI)	18MPa(2600PSI)
Flow Rate @ Max. Pressure	1.3LPM(0.34GPM)	1.8LPM(0.47GPM)	2.6LPM(0.68GPM)	5LPM(1.3GPM)

DP13M21-425A-RP* - Rated Power 2.5kW (12V only)

Pump Displacement	1.6cc	2.1cc	2.7cc	3.2cc
Rated Pressure	27MPa(3900PSI)	21MPa (3000PSI)	16MPa (2500PSI)	14MPa (2000PSI)
Flow Rate @ Rated Pressure	2.2LPM(0.58GPM)	3.9LPM (1GPM)	5LPM (1.32GPM)	6.2LPM (1.6GPM)
Max Pressure	29MPa(4200PSI)	27MPa (3900PSI)	20MPa (2900PSI)	20MPa (2900PSI)
Flow Rate @ Max. Pressure	1.8LPM(0.47GPM)	2.6LPM (0.68GPM)	3.8LPM (1.0GPM)	4.8LPM (1.2GPM)

DP13M21-428B-RP* - Rated Power 2.8kW (24V only)

Pump Displacement	1.6cc	2.1cc	2.7cc	3.2cc
Rated Pressure	25MPa (3600PSI)	18MPa (2600PSI)	14MPa (2000PSI)	10MPa (1450PSI)
Flow Rate @ Rated Pressure	4LPM (1.1GPM)	6LPM (1.5GPM)	7.8LPM (2.0GPM)	10LPM (2.7LPM)
Max Pressure	30MPa (4350PSI)	28MPa (4000PSI)	24MPa (3400PSI)	20MPa (2900PSI)
Flow Rate @ Max. Pressure	2.5LPM (0.6GPM)	3.2LPM (0.8GPM)	4.5LPM (1.1GPM)	4.8LPM (1.2GPM)

	DP13M21 -416	DP13M21 -422	DP13M21 -425	DP13M21 -428
Lm	8" (203mm)	8" (203mm)	8.78" (223mm)	9.85" (250mm)
Rated Power	1.6kW (12V)	2.2kW (24V)	2.5kW (12V)	2.8kW (24V)

P/N	RP0	RP1	RP2	RP3	RP4	RP5
Lt	7.68" 195mm	11.42" 290mm	13.19" 335mm	17.32" 440mm	21.65" 550mm	27.56" 700mm
Volume	0.75US Gal. 2.8L	1US Gal. 4L	1.5US Gal. 6L	2.2US Gal. 8.5L	3US Gal. 11L	4 US Gal. 15L

Configuring Options

Motor Starter: #SR3A-2, DC12V; #SR3B-2, DC24V

Valve: #5VP-08-2-NC, DC12V/DC24V

DC Motor: #416A-2, (1.6kW, DC12V); #422B-2, (2.2kW, DC24V); #425A-2, (2.5kW, DC12V); #428B-2, (2.8kW, DC24V)

Main Manifold: #UD021A

Shaft Coupling: #CP18-42.5

Gear Pump: #G110 - 1.1ml/r; #G160 - 1.6ml/r; #G210 - 2.1ml/r; #G270 - 2.7ml/r; #G320 - 3.2ml/r

Tank Options: (Default) Type RP Polyurethane, Semi Clear; Type MS Steel, Black Powder Coating; Type LS Steel, Black Powder Coating; Type MT Steel, Black Powder Coating

RP Series, Polyurethane Tank.

P/N	RP0	RP1	RP2	RP3	RP4	RP5
Lt	7.68" 195mm	11.42" 290mm	13.19" 335mm	17.32" 440mm	21.65" 550mm	27.56" 700mm
Volume	0.75US Gal. 2.8L	1US Gal. 4L	1.5US Gal. 6L	2.2US Gal. 8.5L	3US Gal. 11L	4 US Gal. 15L

MT Series, Steel Tank.

P/N	MT2	MT3	MT4	MT5	MT6	MT7	MT8
Lt	11" 280mm	13.25" 337mm	15.5" 395mm	20" 510mm	24.6" 625mm	29.13" 740mm	33.6" 855mm
Volume	2.0US Gal. 7.5L	2.5US Gal. 10L	3.0US Gal. 12L	4.0US Gal. 15L	5.0US Gal. 19L	6.0US Gal. 23L	7.0US Gal. 27L

LS Series, Steel Tank.

P/N	LS0	LS1	LS2	LS3	LS4	LS5	LS6
Lt	9" 230mm	10.63" 280mm	14.17" 360mm	17.72" 450mm	20.47" 550mm	24.8" 630mm	31.9" 810mm
Volume	0.6US Gal. 2.3L	1US Gal. 3.8L	1.5US Gal. 6L	2.0US Gal. 7.6L	2.5US Gal. 9.5L	3.0 US Gal. 11.4L	4.0 US Gal. 15L

MS Series, Steel Tank.

P/N	MS1	MS2	MS3	MS4	MS5	MS6	MS7	MS8
Lt	5.9" 150mm	7.9" 200mm	9.84" 250mm	11.75" 300mm	13.75" 350mm	15.75" 400mm	17.72" 450mm	21.65" 550mm
Volume	0.26US Gal 1L	0.36US Gal 1.4L	0.47US Gal 1.8L	0.66US Gal 2.4L	0.79US Gal 2.8L	0.87US Gal 3.3L	1US Gal 3.8L	1.25US Gal 4.75L

Handset Controller (Optional)

KCB Series

Default: KCB22-XX

With Quick Disconnect: KCB22C-XX and CW401-0.35-02 Harness

